



## ELECTRIC COUNTERBALANCED TRUCKS

**CAPACITY: 13,000 – 17,500 lbs.**

**E60 - E80/900**

**SERIES 1279**

### Safety

Handling loads up to 17,500 lbs. means safety is top priority. The overhead guard forms a strong, protective enclosure providing optimum structural integrity, safety and comfort to the operator. The unique mast design, with its slim profile, enables outstanding visibility and safety while handling loads.

### Performance

High-capacity electric forklifts are expected to deliver high performance. Two powerful traction motors, maintenance-free brakes and intelligent electronic controls deliver the highest level of productivity. Precise control and performance at a maximum speed of 10 mph with and without load ensures maximum productivity.

### Comfort

Working efficiently for extended periods is only possible with a comfortable operator. An ergonomic layout of the controls, adjustability of the armrest and seat, patented Linde Load Control, dual pedal directional control and the innovative cushioning of the operator cab provide the best possible intuitive interface between truck and operator.

### Reliability/Durability

The Linde electronic control system provides the highest level of both because of its dual circuit monitoring capability and totally sealed housing, which provide high IP protection against moisture, abrasives and corrosives. With the aid of the diagnostic tool, Linde truck systems are fully monitored and set to individual needs.

### Productivity

The Linde energy management system ensures intelligent and economical energy consumption. The projected remaining operating time is automatically calculated for the operator.

# STANDARD EQUIPMENT / OPTIONAL EQUIPMENT

## STANDARD EQUIPMENT

---

Linde hydrostatic power steering

---

Linde twin pedal directional control

---

Adjustable armrest

---

Linde Load Control working hydraulics system

---

2 x 10.5 kW maintenance-free AC drive motors

---

Graphic display of battery operating time (hh:min)

---

Standard monitoring of battery door

---

Automatic parking brake

---

High-performance dual hydraulic lift motors

---

Proportional reduction of travel speed when cornering  
(Linde Curve Assist)

---

Seamless electronic control of all traction and hydraulic  
functions

---

---

Lockable, underseat storage box compartment

---

Hydraulically cushioned, full suspension operator's seat  
with integral armrest

---

Comprehensive digital instrument display

---

Generous storage space for writing materials

---

Superelastic tires

---

Three drive modes providing the perfect combination of  
performance and efficiency

---

Clearview mast

---

Load backrest

---

## OPTIONAL EQUIPMENT

---

Single-pedal directional control with forward/reverse selector  
in the armrest

---

Alternative fork length

---

Charging on rear side with active ventilation

---

One, two or three hydraulic circuits for additional  
attachments

---

Polycarbonate top screen on overhead guard, modular  
cabin design up to full cabin

---

Top screen in bulletproof glass

---

Heating (with pollen protection filter)

---

Fabric covered comfort seat

---

Super-comfort seat with air suspension, heater and back-  
rest extension

---

---

Single hydraulic joystick control

---

Truck lighting

---

Working lamps with LED technology

---

Flashing beacon/rotating beacon

---

Audible reversing alarm

---

External, internal and panoramic mirror

---

Clipboard with LED illumination

---

Alternative custom paintwork

---

Alternative tire types

---

Electrical socket 12V

---

BlueSpot™

---

Other options available on request

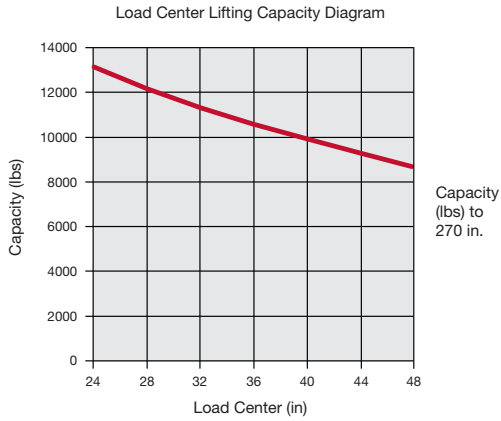
---



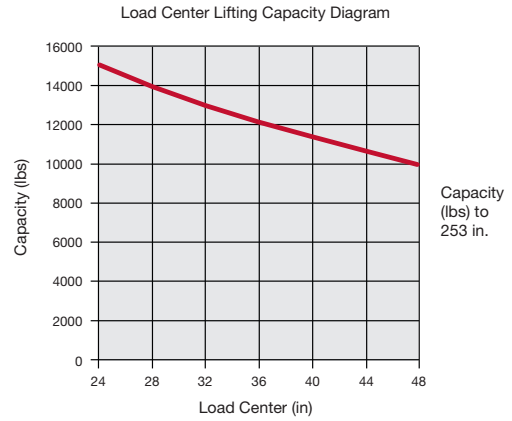
# DOWNRATING CHARTS\*

Reference solid pneumatic tires with Linde standard carriage and forks.

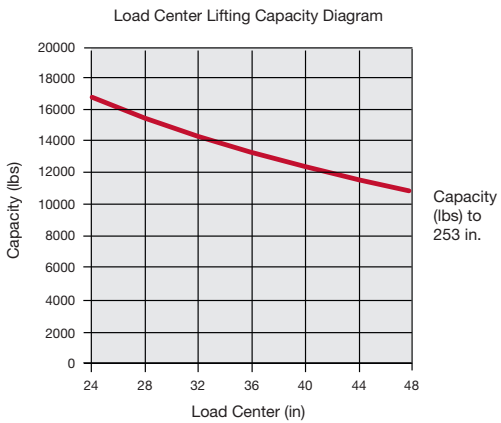
## E60 (Simple Mast)



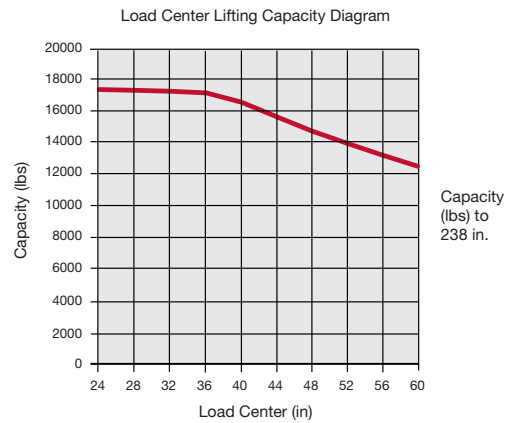
## E70 (Simple Mast)



## E80 (Simple Mast)



## E80/900 (Simple Mast)



\*For quick reference only, contact factory for detailed ratings.





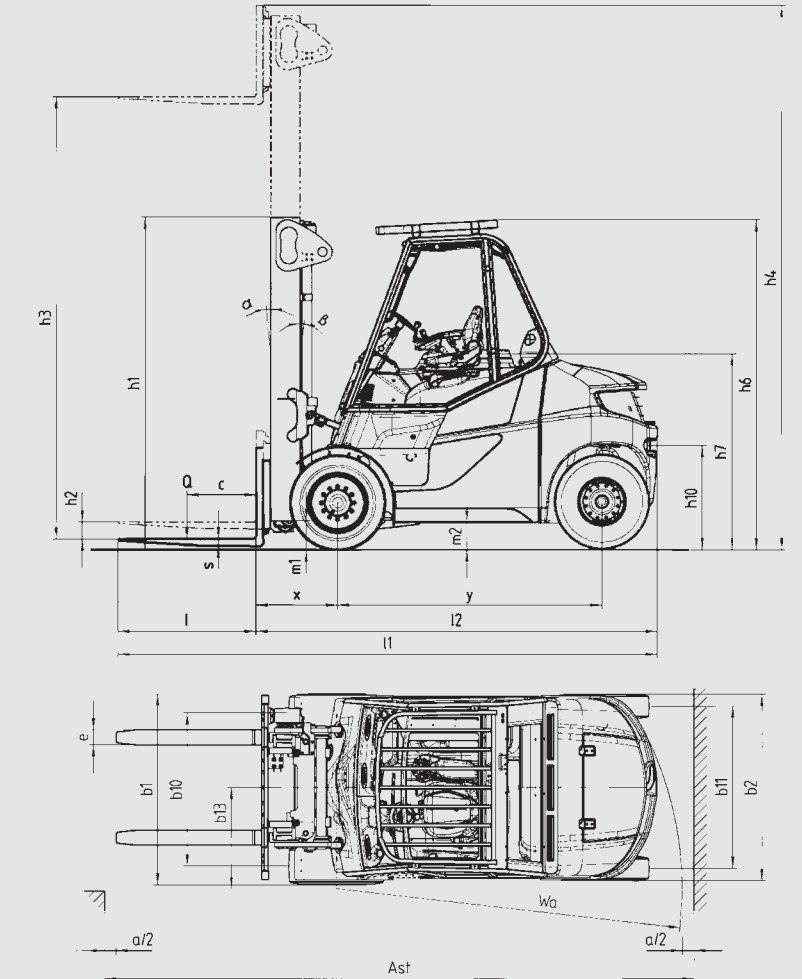


# TECHNICAL DATA

June 2017 / Series 1279

Characteristics	LINDE		LINDE		LINDE		LINDE		
	E60		E70		E80		E80/900		
1.1	Manufacturer		LINDE		LINDE		LINDE		
1.2	Model designation		E60		E70		E80/900		
1.3	Power unit		Electric		Electric		Electric		
1.4	Operation		Rider Seated		Rider Seated		Rider Seated		
1.5	Load capacity/Load	Q	13000 lbs	6000 kg	15000 lbs	7000 kg	17500 lbs	8000 kg	
1.6	Load center	c	24 in	600 mm	24 in	600 mm	36 in	900 mm	
1.8	Axle center to fork face	x	28 in	710 mm	28.4 in	720 mm	29.5 in	750 mm	
1.9	Wheelbase	y	91 in	2300 mm	91 in	2300 mm	94.5 in	2400 mm	
Weights	2.1	Service weight <sup>1</sup>	27196 lbs	12334 kg	28429 lbs	12893 kg	30804 lbs	13970 kg	
	2.2	Axle load with load, front/rear	35219/5201 lbs	15975/2359 kg	39416/4440 lbs	17879/2014 kg	43354/5082 lbs	19665/2305 kg	
	2.3	Axle load without load, front/rear	14458/12734 lbs	6558/5776 kg	15128/13296 lbs	6862/6030 kg	15596/15203 lbs	7074/6896 kg	
Wheels/Tires	3.1	Tires rubber, SE, pneumatic, polyurethane	SE		SE twin		SE twin		
	3.2	Tire size, front	355/50-20		8.25-15		315/70-15		
	3.3	Tire size, rear	8.25-15		315/70-15		315/70-15		
	3.5	Wheels, number front/rear (x = driven)	2x / 2		4x / 2		4x / 2		
	3.6	Track width, front	b10	52 in	1326 mm	60 in	1514 mm	62 in	1564 mm
	3.7	Track width, rear	b11	55 in	1406 mm	55 in	1396 mm	55 in	1396 mm
	Dimensions	4.1	Mast/fork carriage tilt, forward/backward	5.0° / 7.5°		5.0° / 7.5°		5.0° / 7.5°	
4.2		Height of mast, lowered	h1	114 in	2890 mm	114 in	2888 mm	114 in	2885 mm
4.3		Free lift	h2	6 in	150 mm	6 in	150 mm	6 in	150 mm
4.4		Lift	h3	152 in	3850 mm	136 in	3450 mm	120 in	3050 mm
4.5		Height of mast, extended	h4	187 in	4754 mm	179 in	4545 mm	179 in	4545 mm
4.7		Height of overhead guard (cabin)	h6	112 in	2838 mm	112 in	2838 mm	112 in	2838 mm
4.8		Height of seat/stand on platform	h7	67 in	1705 mm	67 in	1705 mm	67 in	1705 mm
4.12		Towing coupling height	h10	34 in	853 mm	34 in	854 mm	34 in	858 mm
4.19		Overall length	l1	185 in	4693 mm	185 in	4703 mm	185 in	4703 mm
4.20		Length to fork face	l2	138 in	3493 mm	138 in	3503 mm	138 in	3503 mm
4.21		Overall width	b1/b2	65.35/63.62 in	1660/1616 mm	78.90/64.57 in	2004/1640 mm	83.12/65.12 in	2111/1654 mm
4.22		Fork dimensions	SxExL	2.36x5.12x47.24 in	60x130x1200 mm	2.76x5.91x47.24 in	70x150x1200 mm	2.76x5.91x47.24 in	70x150x1200 mm
4.23		Fork carriage to ISO 2328, class/type A, B		4A		4A		4A	
4.24		Width of fork carriage	b3	63 in	1600 mm	71 in	1800 mm	86 in	2180 mm
4.31		Ground clearance, below mast	m1	8.7 in	228 mm	8.7 in	220 mm	8.7 in	220 mm
4.32		Ground clearance, center of wheelbase	m2	8.4 in	214 mm	8.3 in	210 mm	8.3 in	210 mm
4.34.1	Aisle width with pallet 1000 x 1200 across forks <sup>2</sup>	Ast	193 in	4910 mm	194 in	4920 mm	194 in	4920 mm	
4.34.2	Aisle width with pallet 800 x 1200 along forks <sup>2</sup>	Wa	201 in	5110 mm	202 in	5120 mm	202 in	5120 mm	
4.35	Turning radius	b13	118 in	3000 mm	118 in	3000 mm	118 in	3000 mm	
4.36	Minimum pivoting point distance		35 in	877 mm	35 in	877 mm	35 in	877 mm	
Performance	5.1	Travel speed, with/without load	10/10 mph	16/16 km/h	10/10 mph	16/16 km/h	10/10 mph	16/16 km/h	
	5.2	Lifting speed, with/without load	74.8/90.5 fpm	0.38/0.46 m/s	63.0/90.5 fpm	0.32/0.46 m/s	59.1/90.5 fpm	0.3/0.46 m/s	
	5.3	Lowering speed, with/without load	106.3/98.4 fpm	0.54 / 0.5 m/s	110.2/88.6 fpm	0.56 / 0.45 m/s	110.2/88.6 fpm	0.56 / 0.45 m/s	
	5.6	Maximum tractive force, with/without load	9670/9670 lbs	43000/43000 N	9670/9670 lbs	43000/43000 N	9670/9670 lbs	43000/43000 N	
	5.7	Climbing ability, with/without load		16.4 / 24.6 %		14.9 / 23.0 %		13.4 / 21.1 %	
	5.10	Service brake		hydr. / mech.		hydr. / mech.		hydr. / mech.	
Drive	6.1	Drive motor, 60 minute rating	2x14.75 hp	2x10.5 kW	2x14.75 hp	2x10.5 kW	2x14.75 hp	2x10.5 kW	
	6.2	Lift motor, rating at S3 15%	2x28.16 hp	2x21 kW	2x28.16 hp	2x21 kW	2x28.16 hp	2x21 kW	
	6.4	Battery voltage/rated capacity (5h)	80 / 1240 V/Ah		80 / 1240 V/Ah		80 / 1240 V/Ah		
	6.5	Battery weight (± 5%)	6140 lbs	2785 kg	6140 lbs	2785 kg	6140 lbs	2785 kg	
	Other	10.1	Operating pressure for attachments	3843 psi	265 bar	3843 psi	265 bar	3843 psi	265 bar
10.2		Oil flow for attachments	22.45 g/min	85 l/min	22.45 g/min	85 l/min	22.45 g/min	85 l/min	
10.7		Noise level at operator's ear	<65 dB(A)		<65 dB(A)		<65 dB(A)		

<sup>1</sup>Including battery (line 6.5)  
<sup>2</sup>Add clearance



# FEATURES

## Compact drive axle

- > Twin drive motor design with high-performance Linde AC technology
- > Automatic parking brake
- > Maintenance-free, oil-bath service brakes



## Ease of servicing

- > Quick access to hydraulic oil filter and level check
- > Fast access to windscreen washer system and coolant reservoirs

## Linde twin drive pedal controls

- > Seamless, rapid reversing without repositioning the feet
- > Short pedal travel
- > Fatigue-free working environment
- > Increased throughput and performance

## Linde Load Control

- > Safe and highly efficient load handling
- > Precise and effortless fingertip control of all mast functions
- > Small, tactile mini levers integrated in the adjustable armrest

## Dual drive motor power axle

- > Two powerful AC drive motors integrated in front axle
- > Active steering support via dual drive motor



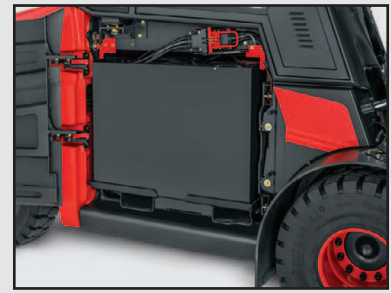
## Linde operator compartment

- > Ergonomic design for efficient, fatigue-free working environment
- > Spacious operator compartment with generous floor plate area and adjustable seat
- > Reduced vibrations due to innovative shock-mounted cab structure



## Clearview mast design

- > Excellent view of load and surroundings through the robust and slim mast proles
- > Maximum base capacity to high lift heights
- > Outstanding residual capacities



## Linde energy management system

- > Optimized energy consumption
- > Accurate battery condition monitoring
- > Simple horizontal low-level battery changing (if required)

For more information on Linde material handling equipment, please contact:

KION North America Corporation  
2450 West 5th North Street, Summerville, SC 29483  
Phone: (843) 875-8000 Truck Sales Fax: (843) 875-8471  
E-mail: [trucksales.na@kiongroup.com](mailto:trucksales.na@kiongroup.com)  
[www.kion-na.com](http://www.kion-na.com)