



ELECTRIC PALLET TRUCK

CAPACITY: 4,500 lbs.

MT20

SERIES 8903

Design

The powered traction and lift of the MT20 minimizes the operator's physical input and provides a highly productive and strain-free working environment. It is equipped with an electromagnetic fail-safe and a parking brake. A robust two-piece bumper protects the drive unit and components, while the low-profile chassis still allows dockboard use. The long, low-mounted tiller arm places the operator at a comfortable working distance from the truck.

Performance

With a load capacity of 4500 lbs., the MT20 offers a highly cost-effective and productive solution for short distance transfer duties. The rugged drive unit offers consistent reliability and performance. The battery is maintenance-free and has automatic discharge protection to extend battery life. This cuts the lift function when the battery reaches the 80% discharge level.

Comfort

The dual butterfly control levers on the ergonomic tiller head ensure precision traction control with either hand. The truck is very maneuverable when operating in trucks or confined spaces. A built-in charger enables opportunity charging at any convenient power point for optimum uptime.

Reliability

The durable drive unit of the MT20 delivers consistent high-performance and reliability. A unique caster wheel system ensures excellent stability when cornering and eliminates the risk of 'grounding' the chassis. There is a discharge indicator and an emergency isolator button. The robust chassis has a reinforced fork structure for the safe, efficient handling of loads up to 4500 lbs.

Service

The AC drive motor optimizes uptime ratios between routine service periods and reduces service costs, while a reliable, energy efficient controller delivers smooth handling performance.

TECHNICAL DATA

March 2018

Characteristics	1.1	Manufacturer			LINDE
	1.2	Model designation			MT20
	1.3	Power unit			Battery
	1.4	Operation			Pedestrian
	1.5	Load capacity	Q	lbs	4500
	1.6	Load center	c	in	24
	1.9	Wheelbase	y	in	55.8
Weights	2.1	Service weight (+/- 5.0%)		lbs	1118
	2.2	Axle load with load, front/rear		lbs	2064/3454
	2.3	Axle load without load, front/rear		lbs	909/209
Wheels	3.1	Tires Cushion, SE, Pneumatic, Polyurethane			C+P/P
	3.2	Tire size, front		in	9x3
	3.3	Tire size, rear		in	3.25 x 4.5
	3.4	Caster wheel dimension		in	3.3x1.9
	3.5	Wheels, number front / rear (X=driven)			
Dimensions	4.4	Lift	h_3	in	4.7
	4.9	Height of tiller arm in operating position, min/max	h_{14}	in	28/47
	4.15	Height, lowered	h_{13}	in	3.25
	4.19	Overall length	l_1	in	69
	4.20	Length to fork face	l_2	in	23.5
	4.21	Overall width	h_0/b_1	in	28
	4.22	Fork dimensions	s/e/l	in	2.2 x 6.7 x 45
	4.25	Fork spread	b_5	in	27.0
	4.32	Ground clearance, center of wheelbase	m_2	in	1.2
	4.34.2	Aisle width with pallet 48x40 along forks	Ast	in	71.5
4.35	Turning radius	Wa	in	67	
Perf.	5.1	Travel speed, with/without load		mph	3.5/3.6
	5.8	Maximum gradeability with load/without load		%	8.0 / 16.0
Drive	6.3	Battery according to DIN 43531/35/36 A,B,C, no			26.8 x 8.1 x open
	6.4	Battery voltage/rated capacity (5h)		V/Ah	24/224
	6.5	Battery weight (\pm 5%)		lbs	359
	8.1	Type of drive unit			AC

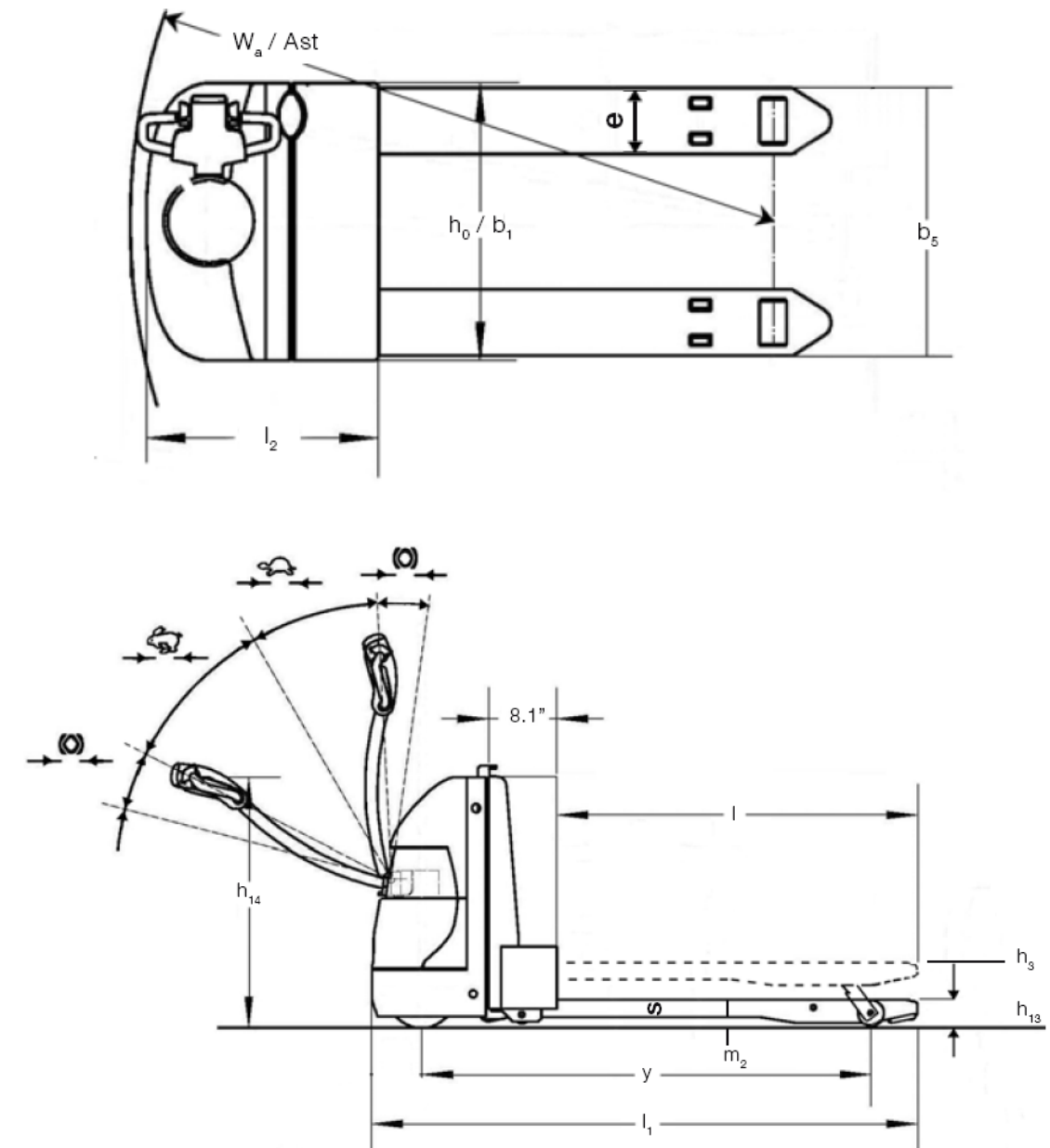
STANDARD / OPTIONAL EQUIPMENT

Standard Equipment

- > Drive tire: Polyurethane
- > Load wheels: Polyurethane
- > Vertically-mounted traction motor
- > Battery 24V/224Ah
- > Lift motor
- > Forks: 45 in. long by 27 in. wide
- > Automatic parking brake
- > Truck immobilized when switched off
- > Ergonomic operation with butterfly button
- > Safety switch on tiller head
- > Horn

Optional Equipment

- > 9.1" battery compartment
- > Cold conditioning
- > Rubber drive tire
- > Fork entry rollers
- > Load backrest 48 in. - 60 in.
- > Fork length / width
- > Stability casters



FEATURES

Drive Unit

- > AC drive motor
- > Reliable, energy-efficient AC electronic controller
- > Adjustable parameters: travel speed, acceleration
- > Creep speed when tiller handle is vertical (5°)

Energy

- > Maintenance-free battery pack: 24V/224Ah
- > Automatic lift cutoff when battery reaches 80% discharge level for extended battery life



Controls

- > Traction and lift controls grouped on ergonomic tiller head
- > Dual butterfly control levers for use with either hand
- > Belly switch on tiller head stops truck when actuated



Braking

- > Automatic deceleration when butterfly button is released
- > Parking brake applies automatically when tiller arm is released
- > Quick disconnect power cutoff

Drive System

- > Caster wheel optimizes stability when cornering and prevents chassis from making ground contact
- > Optional entry rollers ensure easy pallet entry
- > The single load wheel for ease of pallet entry



Fork Tips

- > Designed for easy entry and exit of pallets



Chassis

- > Robust two-piece bumper protects the drive unit and components
- > Low chassis frame
- > Long, low-mounted tiller ensures operator is comfortable distance from the truck
- > Rugged, reinforced fork structure provides handling of loads up to 4,500 lbs.

For more information on Linde material handling equipment, please contact:

KION North America Corporation
2450 West 5th North Street, Summerville, SC 29483
Phone: (843) 875.8000 Truck Sales Fax: (843) 875.8471
Email: trucksales.na@kiongroup.com
www.kion-na.com