

NOBLELIFT

Material Handling



NB530/NR530

Walk-behind Scrubber/ Ride-on Scrubber

NEW *Noblelift Products*
ARRIVAL

NOBLELIFT INTELLIGENT EQUIPMENT CO., LTD

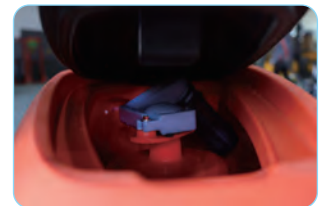
Application

NB530 Walk-behind Scrubber is a brand new self-designed walk-behind scrubber that is suitable for small-and medium-sized places with large flow of people but many small and congested areas, like shopping malls, office buildings, stations, hotels, hospitals, etc. The scrubber delivers superior cleaning results in the compact, flexible and navigating-around-obstacles design.

Features and Advantages

- A large opening on the recovery tank with detachable cap top cover provides perfect and easy access for cleaning and maintenance.
- Reliable and simple Multi-touch control panel with low maintenance cost.
- Big solution tank with filler point located at the front of the scrubber makes the water refilling fast and easy.
- The brush cover and squeegee processed by aluminum die-casting with further spraying are robust, durable and well protected against rust.
- The down pressure from the brush to the ground is designed to be adjustable, which offers versatile and flexible use to cover different floor cleaning requirements and is effective in more applications.
- Efficient mechanical noise reduction system effectively reduces equipment noise during work.
- Efficient and reliable mechanical defoaming and solution tank water-level alarm mechanism greatly improve the service life of the vacuum motor.
- One-button-start design of the motor, digital over-current and under-voltage protection integrated on the controller.
- Patented brush buckle design with longer service life can automatically load and unload the brush.

NB530



NB530 Walk-behind Scrubber--Specifications

Model		NB 530		
TECHNICAL DATA	Cleaning Path (brush diameter)	(in)	21	
	Squeegee Width	(in)	30	
	Solution tank capacity	(gal)	13.2	
	Recovery tank capacity	(gal)	13.2	
	Clean productivity	(yd ² /h)	2150	
	Continuous working time	(h)	3~4	
	Brush motor rated power	(hp)	0.74	
	Vacuum motor rated power	(hp)	0.54	
	Drive motor rated power	(hp)	-	
	Traveling speed	(mph)	-	
	Sound level dB	(dB)	65±3	
	Battery	-	24V (2x12V100Ah) Maintenance free AGM	
	Net weight (without batteries)	(lbs)	196	
	Product dimensions (LxWxH)	(in)	48*21*41	

Application

NR530 Ride-on Scrubber is a brand new self-designed mini ride-on scrubber. The compact size makes it convenient to get in and out of elevators and also ideal for cleaning in confined areas and multi-floor operations.

Features and Advantages

- Adopting front-drive chassis-free, modular patented design to make the scrubber light weight, small turning radius and flexible control;
- Big solution tank with filler point located at the front of the scrubber makes the water refilling fast and easy
- Integrated waterproof touch panel, standard LCD display and visual equipment parameters make it easy to read, simple and convenient to operate, fast and efficient to provide maintenance data;
- Three-speed modes and adjustable water flow;
- Innovative design of linear actuators supports one-button electric lifting/lowering of brush and squeegee-holder, automatic lifting of squeegee-holder for reverse driving, which is safe and efficient;
- Aluminum die-casting brush cover and squeegee, and the brush holder supports one-button automatic loading and unloading;
- A large opening on the recovery tank with detachable cap top cover provides perfect and easy access for cleaning and maintenance;
- The seat is equipped with the safety switch, and the scrubber will automatically stop when the driver leaves the seat.
- Efficient mechanical noise reduction system and ECO mode can effectively reduce equipment noise during work;
- Efficient and reliable mechanical defoaming and solution tank water-level alarm mechanism greatly improve the service life of the vacuum motor;

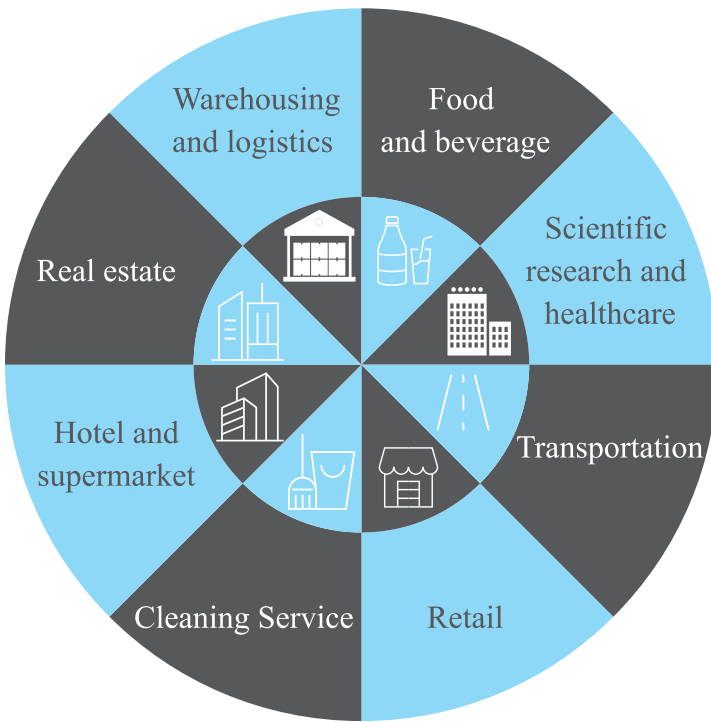
NR530



NR530 Ride-on Scrubber--Specifications

Model		NR530
TECHNICAL DATA	Cleaning Path (brush diameter)	(in) 21
	Squeegee Width	(in) 30
	Solution tank capacity	(gal) 18.5
	Recovery tank capacity	(gal) 18.5
	Clean productivity	(yd ² /h) 3700
	Continuous working time	(h) 3~4
	Brush motor rated power	(hp) 0.74
	Vacuum motor rated power	(hp) 0.74
	Drive motor rated power	(hp) 0.54
	Traveling speed	(mph) 0~3.7
	Sound level dB	(dB) 68±3
	Battery	- 24V (2x12V120Ah) Maintenance free AGM
	Net weight (without batteries)	(lbs) 265
Product dimensions (LxWxH)	(in) 50*24*40	

Industries



Scenarios



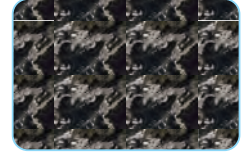
Epoxy Flooring



Wear-Resisting Flooring



Tile Flooring



Marble Flooring



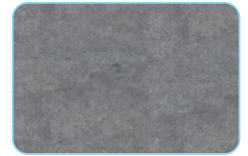
PVC



Terrazzo Flooring



Small Square Brick Flooring



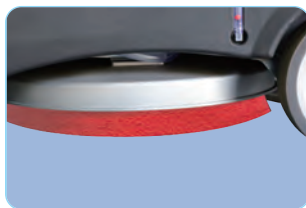
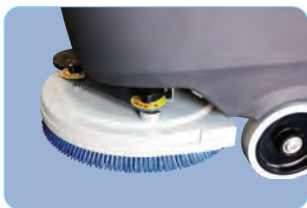
Lime Flooring

The recommended application of brush/ needle disc for fixing pad:

	Brush			Needle disc+pad		
	Soft brush	Nylon (Standard)	Hard brush	White	Red	Black
Concrete floor		Applicable	Applicable		Applicable	Applicable
Terrazzo floor		Applicable	Applicable		Applicable	Applicable
Tile/ Slate floor	Applicable	Applicable			Applicable	
Marble floor	Applicable	Applicable		Applicable	Applicable	
Plastic floor	Applicable			Applicable	Applicable	
Rubber floor	Applicable			Applicable		

The application of squeezer rubber strip:

	Rubber (Standard)	(PU)
Concrete floor	Applicable	Applicable
Terrazzo floor	Applicable	Applicable
Tile/ Slate floor	Applicable	
Marble floor	Applicable	
Plastic floor	Applicable	
Rubber floor	Applicable	



Notes:

1. Soft brush: for cleaning and polishing smooth surface
2. Nylon brush: for general floor cleaning (standard configuration)
3. Hard brush: for removing stubborn dirt on hard ground
4. Needle disc: holding the pad, reducing the wear on the floor; the pad is used together with the needle disc. According to different conditions of the floor, we need to choose different pads in different colors (generally the deeper the color is, the greater the friction on the floor).

Specific application of pads:

- a) White pad: for general cleaning and polishing, marble and smooth floors
- b) Red pad: for general floor cleaning
- c) Black pad: for removing stubborn stains on hard floors



Note:

Polyurethane (PU) strip has strong wear resistance and oil resistance, which is suitable for oil floor conditions, but cutting and tearing performance of PU strip is poor, so it is not suitable for quadrel/ brick or tile floors.



NB530

Walk-behind Scrubber



NR530

Ride-on Scrubber

www.nobleliftNA.com

Biscotti - Princi
We promise, We deliver

**NOBLELIFT NORTH
AMERICA CORP**

Add:2461 S Wolf Road
Des Plaines, IL 60018
Tel:001-847-595-7100
Fax:001-847-595-7200
Email:sales@nobleliftna.com
Http:www.nobleliftna.com

Noblelift North America

2461 S. Wolf Road
Des Plaines, IL 60018
T: 847-595-7100
F: 847-595-7200
E. Sales@nobleliftna.com
www.nobleliftNA.com



Official website



Our Wechat