

LITHIUM

FE4P90Q-110Q

9,000 - 11,000 lbs. Capacity

Four Wheel Lithium Forklift



Why choose between price and quality **WHEN YOU CAN HAVE BOTH!**



HIGHLIGHTS

- ▶ Powerful high quality AC drive system
- ▶ Infinitely variable hydraulic control speeds
- ▶ On-demand fully hydrostatic power steering (FHPS)
- ▶ 4-Way proportional hydraulic control valve
- ▶ Side-shift
- ▶ Multi-function LED Display
- ▶ Deluxe suspension seat
- ▶ Tilt steering column
- ▶ Intelligent Monitoring System (IMS) display indicators
- ▶ CAN-bus communications system
- ▶ On-board self-diagnostics
- ▶ Wireless 4G battery monitoring
- ▶ Operator presence sensing system
- ▶ Safety Blue light, LED rear work light, headlights, and strobe
- ▶ Rear grab bar with horn
- ▶ Tilt cylinder boots
- ▶ All-around front wheel drive
- ▶ Side extraction battery

FE4P90Q-110Q

9,000 - 11,000 lbs. Capacity
Four Wheel Lithium Forklift

The FE4P90Q-1100Q Series are highly efficient, durable Lithium forklifts. They are designed for indoor and outdoor applications. The mast system, front/rear axles and chassis are engineered to be tough like an Internal Combustion forklift, but with all the advantages of Lithium-iron. AC drive technology is used to achieve high performance with low operating and maintenance costs. Greatly increase your work productivity with these quiet, very low maintenance, ultra-smooth, lithium forklifts.

EASY OPERATION AND GREAT VISIBILITY



Ergonomic U-shaped steering wheel with knob, together with hydraulic controls, provide comfortable and effortless operation.



Mast layout is optimized for a wide view and clear visibility while operating. Intelligent buffering when descending to the ground, effectively protects the ground and cargo from damage.

Ratchet parking brake allows the truck to safely park on a slope of 15%.



The large, ergonomic cab and user-friendly design ensures operator comfort throughout the entire work shift.

Deluxe suspension, fully adjustable seat reduces vibration to the driver to effectively reduce driver fatigue for all sizes of operators.

SUPERIOR DESIGN AND PERFORMANCE



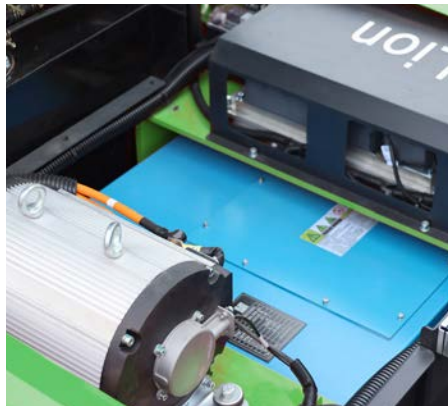
Large ergonomically designed LED display provides easy control and operation, while providing truck status information: parking brake, the driving direction and speed, the hour meter and the fault code.



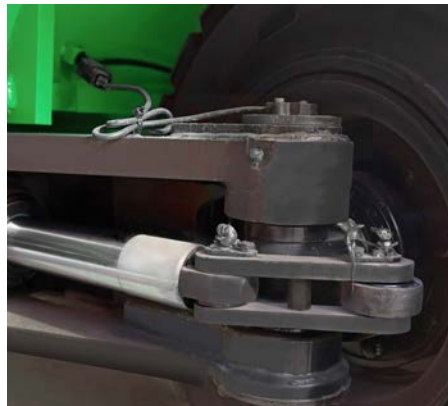
Operator Presence System (OPS) — When operator is not in seat, the hydraulic lift and tilt controls automatically lock out and traveling is disabled.



Side extraction design allows the maintenance-free Lithium battery to be quickly and easily replaced.



Open design for lifting motor and controller provides easy maintenance and allows for wet applications. Waterproof design - IP4 Rated.



Automatic decelerating while turning, improves safety, stability and operator comfort.



Large diameter, solid pneumatic tires ensure comfortable driving for outdoor and indoor use.

HIGH EFFICIENCY AND SAFE LITHIUM-IRON POWER

NOBLELIFT uses Lithium-Iron Phosphate batteries, the longest lasting and safest lithium battery available. Our lithium-iron batteries are equipped with a Battery Management System (BMS), thermal management system, and an automotive-grade DC high-voltage control system. BMS manages charging and discharging data to ensure safety throughout its life cycle.

FE4P90Q-110Q forklifts have a 10 year or 20,000 hours warranty on the lithium-Iron battery cells.



ADVANTAGES OF LITHIUM-IRON POWER

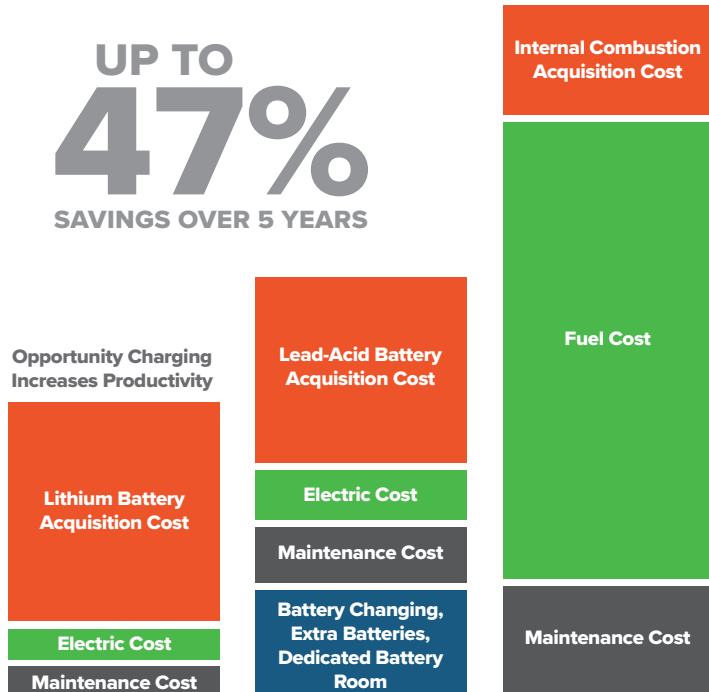


Fast-charging maintenance-free Lithium battery is fully charged in 2-3 hours. Battery can be opportunity charged during user breaks and during shift changes which allows the truck to run continuously through multi-shift operations. No battery changes are necessary.

LITHIUM BATTERY ADVANTAGES

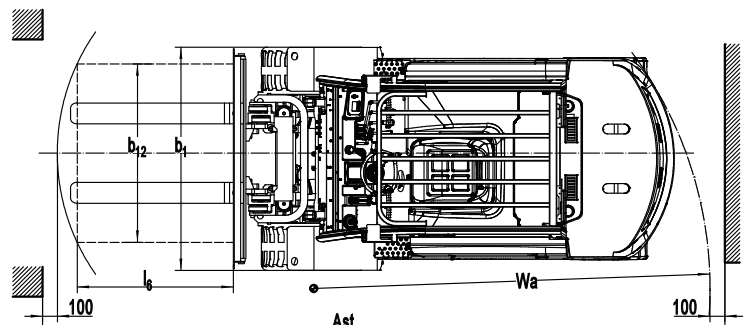
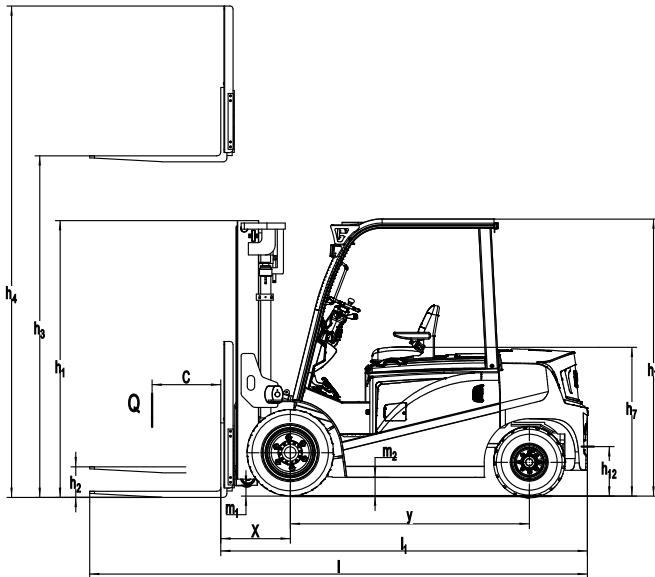
Lead-Acid Battery		Lithium Battery
Lower fleet availability - Work is interrupted because battery needs to be fully charged before next use	Productivity - Memory Effect 	100% Fleet availability - Opportunity charging allows battery to be charged in between use
Periodic battery replacement	Service Life 	Batteries last 3 times longer and do not need to be replaced
Outsourced or in-house maintenance personnel required	Ongoing Maintenance 	No maintenance cost
8-10 Hours - 2 or more batteries per lift truck	Charge Duration 	2-3 Hours - 1 Battery per lift truck
Build an expensive battery room with ventilation	Battery Room 	No battery room needed
Releases hydrogen while charging - Can result in explosion - Acid burns can happen during maintenance	Dangerous Substances 	No dangerous substances
Power loss	Power Savings 	No power loss - Reduces energy consumption by 35%

TOTAL COST OF OWNERSHIP



Mast Table FE4P80-110Q								
Designation	Lift height h3 (in)	Free lift height h2 (in)	Closed mast height h1 (in)	Extended mast height h4 (in)	Tilt forward/ backward a/b (°)	Capacity table (lb) C=24in without sideshift single pneumatic tires		
						FE4P90Q	FE4P100Q	FE4P110Q
Two-stage ZT	98	5.9	79.1	142.4	6 / 10	9,000	10,000	11,000
	106	5.9	83.1	150.3	6 / 10	9,000	10,000	11,000
	118	5.9	89.0	162.1	6 / 10	9,000	10,000	11,000
	130	5.9	94.9	173.9	6 / 10	9,000	10,000	11,000
	138	5.9	98.8	181.8	6 / 10	9,000	10,000	11,000
	142	5.9	100.8	185.7	6 / 10	9,000	10,000	11,000
	146	5.9	102.8	189.6	6 / 10	8,848	9,853	10,859
	157	5.9	110.6	201.5	6 / 6	8,647	9,551	10,859
	177	5.9	120.5	221.1	6 / 6	7,842	8,546	10,859
	185	5.9	124.4	229.0	6 / 6	7,641	8,244	8,848
197	5.9	130.3	240.8	6 / 6	7,239	8,043	8,446	
236	5.9	152.0	280.2	3 / 6	6,033	6,837	7,641	
Two-stage ZZ	98	53.1	79.1	142.4	6 / 10	9,000	10,000	11,000
	106	57.1	83.1	150.1	6 / 10	9,000	10,000	11,000
	118	63.0	89.0	161.9	6 / 10	9,000	10,000	11,000
	130	68.9	94.9	173.7	6 / 10	9,000	10,000	11,000
	138	72.8	98.8	181.6	6 / 10	9,000	10,000	11,000
	142	74.8	100.8	185.5	6 / 10	9,000	10,000	11,000
	146	76.8	102.8	189.4	6 / 10	8,848	9,853	10,859
	157	82.7	110.6	201.3	6 / 6	8,647	9,652	10,456
Three-stage DZ	146	36.1	48.5	189.3	6 / 10	8,848	9,853	10,859
	157	40.0	82.5	201.1	6 / 6	8,647	9,551	10,456
	171	44.6	87.0	214.9	6 / 6	8,043	8,948	9,853
	177	46.5	89.0	220.8	6 / 6	7,842	8,546	9,451
	189	50.5	92.9	232.6	6 / 6	7,440	8,244	9,049
	197	55.0	97.4	240.5	6 / 6	7,239	8,043	8,848
	217	61.5	103.9	260.2	3 / 6	6,435	7,239	8,043
	236	71.1	113.6	278.3	3 / 3	6,033	6,837	7,641

Side shifter - reduce 660lbs for loading capacity



Identification					
1.1	Manufacturer		NOBLELIFT		
1.2	Model		FE4P90Q	FE4P100Q	FE4P110Q
1.3	Drive (electric – battery or mains, diesel, petrol, gas, manual)		Electric		
1.4	Type of operation (hand, pedestrian, standing, seated, order picker)		Seated forklift		
1.5	Load capacity / rated load	Q (lb)	9,000	10,000	11,000
1.6	Load center distance	c (in)	24		
1.8	Load distance, center of drive axle to fork	x (in)	22.2		22.4
1.9	Wheel base	y (in)	76.8		
Weights					
2.1	Service weight including battery (see line 6.5)	lb	14,300	15,290	16,280
2.2	Axle loading, laden front / rear	lb	21,670 / 2,530	23,342 / 2,992	23,760 / 3,520
2.3	Axle loading, unladen front / rear	lb	6,512 / 7,788	6,050 / 9,240	6,160 / 10,120
Wheels, Chassis					
3.1	Tires (solid rubber, superelastic, pneumatic, polyurethane)		Solid pneumatic		
3.2	Tire size, front		250-15		28x12. 5-15
3.3	Tire size, rear		23x9-10		
3.5	Wheels, number front / rear (x = driven wheels)		2x / 2		
3.6	Track width, front	b ₁₀ (in)	47.2		46.7
3.7	Track width, rear	b ₁₁ (in)	44.3		
Basic Dimensions					
4.1	Mast / fork carriage tilt forward / backward	a/b (°)	6 / 10		
4.2	Lowered mast height	h ₁ (in)	86.6		
4.3	Free lift	h ₂ (in)	5.9		
4.4	Lift height	h ₃ (in)	118.1		
4.5	Extended mast height	h ₄ (in)	162.1		
4.7	Overhead load guard height	h ₆ (in)	89.2		
4.8	Seat height / standing height	h ₇ (in)	47.2		
4.12	Coupling height	h ₁₀ (in)	19.3		
4.19	Overall length	l ₁ (in)	161		
4.20	Length to face of forks	l ₂ (in)	118.9		
4.21	Overall width	bl (in)	59.1		
4.22	Fork dimensions	s/e/l (in)	1.97 / 5.9 / 42.1		2.17 / 5.9 / 42.1
4.24	Fork carriage width	b ₃ (in)	54.3		
4.31	Ground clearance, laden, under mast	m ₁ (in)	5.7		
4.32	Ground clearance, center of wheelbase	m ₂ (in)	6.1		
4.33	Right Angle Stack with 40x48 pallet	Ast (in)	167.4		167.6
4.34	Right Angle Stack with 32x48 pallet	Ast (in)	175.3		175.5
4.35	Turning radius	Wa (in)	105.9		
Performance Data					
5.1	Travel speed, laden / unladen	mph	8.68 / 9.3		
5.2	Lift speed, laden / unladen	fpm	59.0 / 82.6		59.0 / 78.6
5.3	Lowering speed, laden / unladen	fpm	74.7 / 59.0		
5.5	Drawbar pull, laden / unladen S2 60 min	lbf	13,200 / 14,300		13,640 / 14,300
5.7	Max. Gradient performance, laden / unladen S2 5 min	%	15 / 20		
5.10	Service brake		Hydraulic		
E-Motor					
6.1	Drive motor rating S2 60 min	HP	26.8		
6.2	Lift motor rating at S3 15%	HP	34.8		
6.3	Battery standard		Lithium-iron phosphate		
6.4	Battery voltage, nominal capacity K5	V/Ah	80 / 400		
6.5	Battery weight	lb	726 / 924		
	Battery dimensions 1/w/h	in	47.2 / 31.9 / 24.0		
	Charger standard	V/A	80 / 150 or 480V 3-phase		
	Operating Temperature	°F	-4 to 131		
Other Details					
8.1	Type of drive control		AC		
8.2	Operating pressure for attachments	psi	2,683		
8.3	Oil volume for attachments	gmp	1,030.25		
8.4	Sound level at driver's ear according to EN 12 053	dB(A)	75		

A GLOBAL LEADER

NOBLELIFT is a global leader in Lithium Technology. We manufacture more than 200 categories and around 30 series of each product. Our products are designed to meet different application demands and are well accepted by our customers in more than 100 countries and regions in Europe, America, Asia, Africa and more.

Products include: sit-down forklifts, rough terrain forklifts, narrow aisle forklifts, walkie-stackers, order pickers, electric pallet trucks, scissor lifts, tuggers, tow tractors, scrubbers, lift tables, manual pallet jacks and more.



FORKLIFTS



NARROW AISLE



STACKERS



POWERED PALLET TRUCKS



SCISSOR LIFTS



TUGGERS



SCRUBBERS

NOBLELIFT NORTH AMERICA

2475 S. Wolf Road
Des Plaines, IL 60018
T: 847-595-7100
F: 847-595-7200
sales@nobeliftna.com
www.nobeliftna.com



Website

AUTHORIZED DEALER