

LITHIUM

OPH26/OPH26K

2,600 lbs. Capacity
Man-Up Order Picker



Capacity
2600lb



Lithium Battery



Compact Size



High
Performance



High
Efficiency



Highly
Cost Effective



Easy
Maintenance



Low noise

Why choose between price and quality **WHEN YOU CAN HAVE BOTH!**



HIGHLIGHTS

- ▶ American Curtis Intelligent Computer Control system
- ▶ 24V fully electric AC system
- ▶ Lithium battery: 24V/560Ah
- ▶ Charger: 24V/200A
- ▶ Fast charging 2.5 hours
- ▶ Large capacity battery provides multiple shift operation.
- ▶ German Hoesch Schwerter profile for mast
- ▶ German BUCHHOLZ valve
- ▶ On-board Curtis self-diagnostics
- ▶ Large LED display: lifting weight, lifting height, speed, power, steering, fault code, alarm and more.
- ▶ Integrated multi-task control
- ▶ Proportional lift for accurate control of the lift height
- ▶ Real-Time Dynamic Adjustment of lift height, load weight and travel speed
- ▶ Electric power steering on default
- ▶ Travel speed: 5.6mph (unloaded), 5.6mph (loaded)
- ▶ Speed reduction in turns

OPH26/OPH26K

2,600 lbs. Capacity
Man-Up Order Picker

The OPH26/OPH26K Series Lithium Man-Up Order Pickers operate within a narrow aisle width and are engineered to deliver exceptional versatility, easy handling and very low maintenance. With a wide range of capabilities, these forklifts can adapt to a variety of warehouse, manufacturing, distribution and food storage environments. They are designed to help run a faster, more efficient operation. Choose from (6) lift heights ranging from 177" to 354".

COMPACT AND HIGHLY PRODUCTIVE ORDER PICKER



SUPERIOR DESIGN AND PERFORMANCE



Automatic decelerating while turning, improves safety, stability and operator comfort, while preventing product damage.

Turning Radius
72"



Right Angle Stack with
40x48 Pallet

55.1"-63.8"
OPH26 OPH26K



Heavy-duty steel mast and chassis deliver unrivaled strength and stability for high lifting heights and heavy loads.

INTELLIGENT. PRODUCTIVE. CONVENIENT.



Multi-functional handle controls key vehicle functions – travel speed and proportional lifting and lowering.



Ergonomic steer tiller handle delivers effortless steering and reduces operator fatigue.



Auto Pallet-locking clamp provides instant load stabilization while significantly boosting load handling speed.



USB connector for charging and powering of additional devices during operations.



Large capacity battery for multiple shift operation. Side extraction reduces maintenance time.



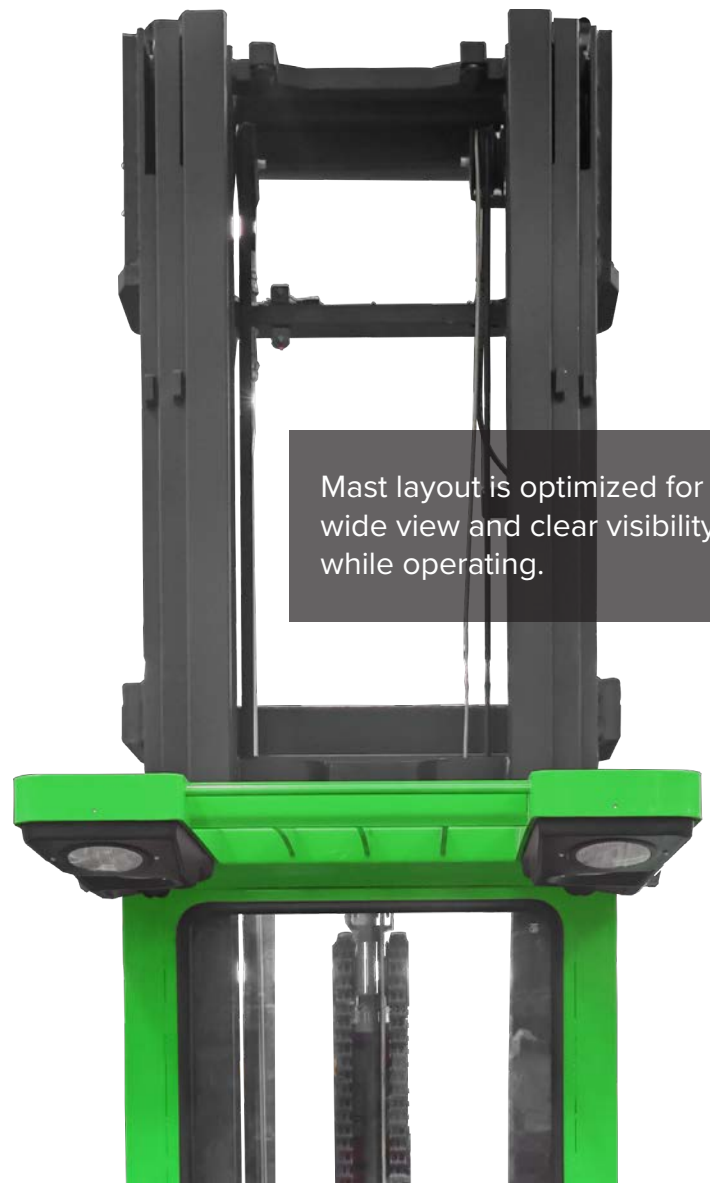
Optional Pin code panel prevents unauthorized use.



INTELLIGENT. PRODUCTIVE. CONVENIENT.



Large LED screen conveniently displays lifting weight, lifting height, speed, power, steering, fault code, alarm and more.



Mast layout is optimized for a wide view and clear visibility while operating.

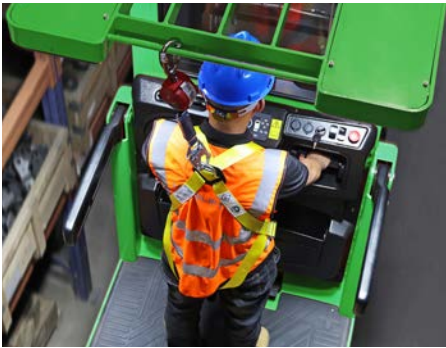
CAN-bus



CURTIS

Easily check condition and troubleshoot with Curtis controller and CAN-bus technology.

RELIABILITY AND SAFETY



Flip-up side gates allow for effortless access to pick window, saving time on each pick, boosting productivity.



Platform lights for dimly lit areas. High-power platform fan keeps operator comfortable in high temperatures.

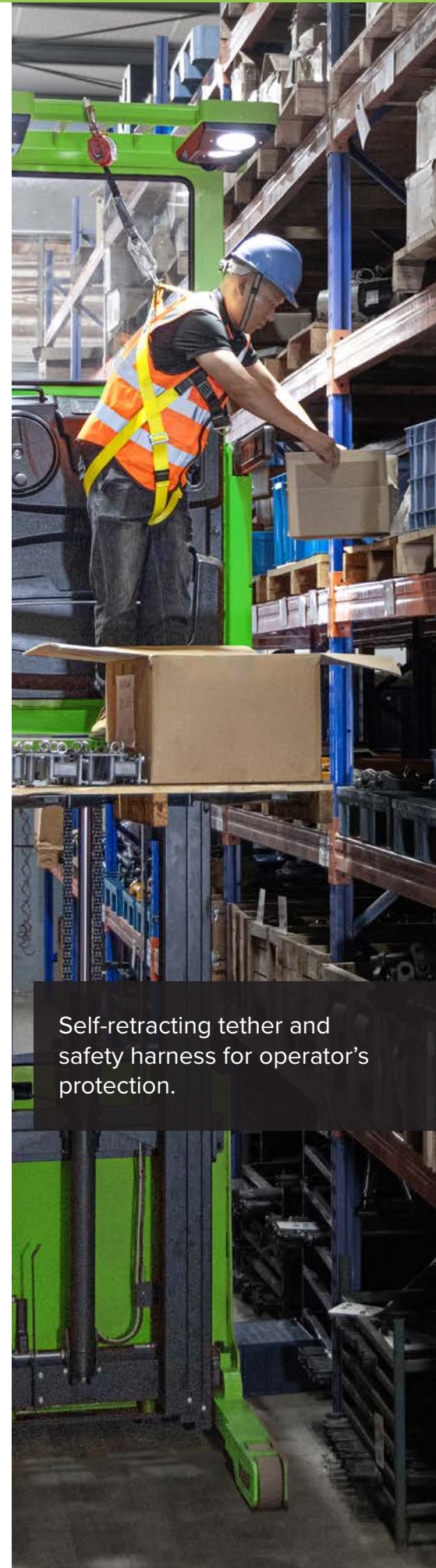
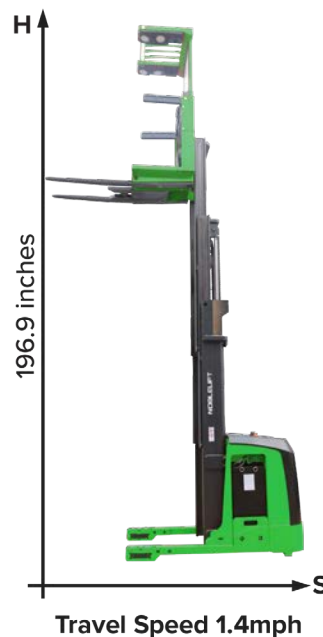
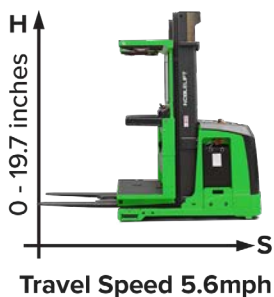


Safety warning lights, buzzer and blue light for safe driving.



Weight activated foot pedal automatically stops the vehicle when the operator's foot is removed from the pedal.

Real-Time Dynamic Adjustment
of lift height, load weight and travel speed



Self-retracting tether and safety harness for operator's protection.

LONG LASTING AND SAFE LITHIUM-IRON POWER

NOBLELIFT uses Lithium-Iron Phosphate batteries, the longest lasting and safest lithium battery available. Our lithium-iron batteries are equipped with a Battery Management System (BMS), thermal management system, and an automotive-grade DC high-voltage control system. BMS manages charging and discharging data to ensure safety throughout its life cycle.



OPH26/OPH26K Order Pickers have a 5 year or 10,000 hours warranty on the lithium-iron battery cells.

ADVANTAGES OF LITHIUM-IRON POWER

Fast-charging maintenance-free Lithium battery is fully charged in 2.5 hours. Battery can be opportunity charged during user breaks and during shift changes which allows the truck to run continuously through multi-shift operations. No battery changes are necessary.



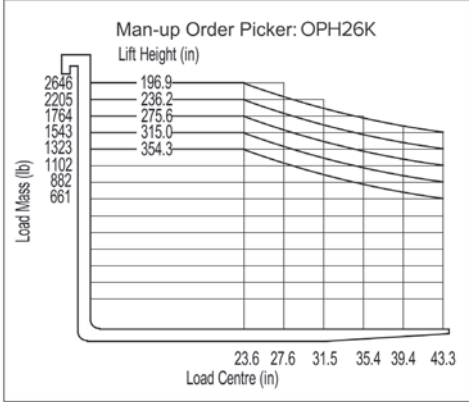
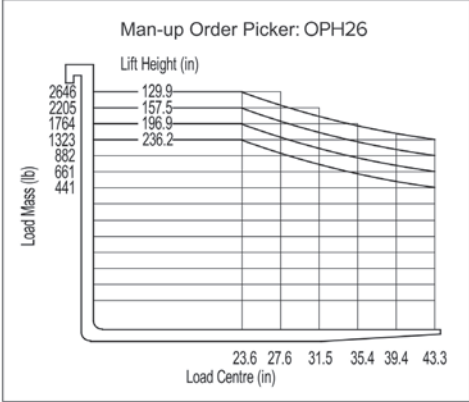
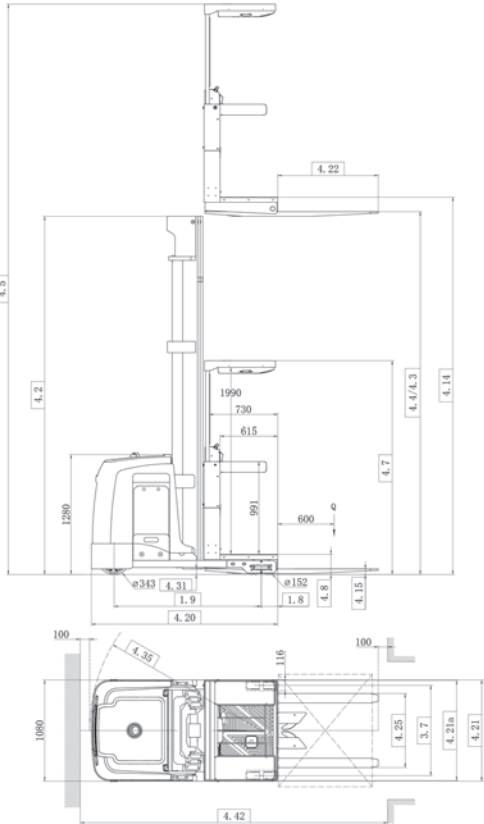
Wireless 4G battery monitoring allows for remote battery programming and troubleshooting.

LITHIUM BATTERY ADVANTAGES

Lead-Acid Battery		Lithium Battery
Lower fleet availability - Work is interrupted because battery needs to be fully charged before next use	Productivity - Memory Effect 	100% Fleet availability - Opportunity charging allows battery to be charged in between use
Periodic battery replacement	Service Life 	Batteries last 3 times longer and do not need to be replaced
Outsourced or in-house maintenance personnel required	Ongoing Maintenance 	No maintenance cost
8-10 Hours - 2 or more batteries per lift truck	Charge Duration 	2.5 Hours - 1 Battery per lift truck
Build an expensive battery room with ventilation	Battery Room 	No battery room needed
Releases hydrogen while charging - Can result in explosion - Acid burns can happen during maintenance	Dangerous Substances 	No dangerous substances
Power loss	Power Savings 	No power loss - Reduces energy consumption by 35%



Warehouse and logistics
 Food storage
 Manufacturing
 Distribution
 Transportation
 Retail



Identification					
1.2	Model		OPH26		
1.3	Drive (electric, diesel, petrol, fuel gas, manual)		Lithium		
1.4	Type of operation (hand, pedestrian, standing, seated, order picker)		Order picker		
1.5	Load capacity / rated load	lb	2,600		
1.6	Load center	c (in)	24		
1.8	Load distance, center of support arm wheel to face of forks	x (in)	6.9		
1.9	Wheel base	y (in)	62		
Weights					
2.1	Service weight (with battery)	lb	7,942	8,008	8,272
2.2	Axle load, laden front / rear	lb	3,000 / 7,605	3,014 / 7,657	3,170 / 7,765
2.3	Axle load, unladen front / rear	lb	4,575 / 3,384	4,603 / 3,422	4,773 / 3,516
Wheels, Chassis					
3.1	Tires (solid rubber, superelastic, pneumatic, polyurethane)		Polyurethane (PU)		
3.2	Tire size, front	in	13.5 x 5.5		
3.3	Tire size, rear	in	6 x 2.9		
3.5	Wheels, number front / rear (x = driven wheels)		1x/4		
3.6	Tread, front	b ₁₁ (in)	/		
3.7	Tread, rear	b ₁₀ (in)	38		
Basic Dimensions					
4.2	Lowered mast height	h ₁ (in)	91.1	95.1	110.8
4.3	Free lift	h ₂ (in)	1.6	5.5	21.3
4.4	Lift height	h ₃ (in)	177	189	236
4.5	Extended mast height	h ₄ (in)	246.4	276.2	323.4
4.7	Overhead guard height	h ₆ (in)	89.6		
4.8	Operator stand height, lowered	h ₇ (in)	8.4		
4.11	Additional lift	h ₉ (in)	/		
4.14	Operator stand height, raised	h ₁₂ (in)	183.2	195	242.3
4.15	Fork height, lowered	h ₁₃ (in)	2.4		
4.20	Headlength	l ₂ (in)	78.1		
4.21	Overall width, front/rear	b ₁ / b ₂ (in)	42.5 / 42.1		
4.21a	Overall width, operator platform	b ₉ (in)	42.1		
4.22	Fork dimensions, standard	s/e/l (in)	2 / 3.9 / 42		
	Fork dimensions, optional length	in	30 / 36 / 39 / 42 / 48		
4.24	Fork carriage width	b ₃ (in)	/		
4.25	Width across forks, min-max	b ₅ (in)	24 - 31.1		
4.27	Width across guide rollers	b ₆ (in)	/		
4.31	Ground clearance, with load below mast	m ₁ (in)	2.4		
4.33	Working aisle width, minimum	Ast (in)	51.2		
4.35	Turning radius	Wa (in)	72		
4.42	Right Angle Stack with 40x48 pallet	Ast (in)	55.1		
	Right Angle Stack with 32x48 pallet	Ast (in)	51.2		
Performance Data					
5.1	Travel speed, laden / unladen	mph	5.6		
5.2	Lift speed, laden / unladen	ft/s	0.49 / 0.75		
5.3	Lowering speed, laden / unladen	ft/s	0.98 / 0.98		
5.10	Service brake		Electromagnetic, regenerative		
E-Motor					
6.1	Drive motor rating, 60 min. rating	HP	5.2		
6.2	Lift motor rating, 15% on time	HP	8.6		
6.3	Max. battery box size	LxWxH (in)	14.7 x 38.4 x 30.9		
6.4	Battery voltage, nominal capacity K5	V/Ah	24V/560Ah		
6.5	Battery weight	lb	1,786		
Others					
8.1	Type of drive control		AC traction		

Identification								
1.2	Model		OPH26K					
1.3	Drive <small>(electric, diesel, petrol, fuel gas, manual)</small>		Lithium					
1.4	Type of operation <small>(hand, pedestrian, standing, seated, order picker)</small>		Order picker					
1.5	Load capacity / rated load	lb	2,600					
1.6	Load center	c (in)	24					
1.8	Load distance, <small>center of support arm wheel to face of forks</small>	x (in)	6.9					
1.9	Wheel base	y (in)	62					
Weights								
2.1	Service weight (with battery)	lb	8,338	8,404	8,668	8,943	9,174	9,405
2.2	Axle load, laden front / rear	lb	3,110 / 7,892	3,140 / 7,928	3,286 / 8,046	3,418 / 8,190	3,517 / 8,322	3,638 / 8,433
2.3	Axle load, unladen front / rear	lb	4,802 / 3,554	4,828 / 3,595	4,950 / 3,736	4,960 / 4,002	5,137 / 4,056	5,313 / 4,112
Wheels, Chassis								
3.1	Tires <small>(solid rubber, superelastic, pneumatic, polyurethane)</small>		Polyurethane (PU)					
3.2	Tire size, front	in	13.5 x 5.5					
3.3	Tire size, rear	in	6 x 2.9					
3.5	Wheels, number front / rear <small>(x = driven wheels)</small>		1x/4					
3.6	Tread, front	b ₁₁ (in)	/					
3.7	Tread, rear	b ₁₀ (in)	51.3					
Basic Dimensions								
4.2	Lowered mast height	h ₁ (in)	91.1	95.1	110.8	123.8	137	150.2
4.3	Free lift	h ₂ (in)	1.6	5.5	21.3	34.3	47.5	60.6
4.4	Lift height	h ₃ (in)	177	189	236	275	315	354
4.5	Extended mast height	h ₄ (in)	246.4	276.2	323.4	362.8	402.2	441.5
4.7	Overhead guard height	h ₆ (in)	89.6					
4.8	Operator stand height, lowered	h ₇ (in)	8.4					
4.11	Additional lift	h ₉ (in)	/					
4.14	Operator stand height, raised	h ₁₂ (in)	183.2	195	242.3	281.7	321	360.4
4.15	Fork height, lowered	h ₁₃ (in)	2.4					
4.20	Headlength	l ₂ (in)	78.1					
4.21	Overall width, front/rear	b ₁ /b ₂ (in)	42.5 / 55.9					
4.21a	Overall width, operator platform	b ₉ (in)	55.9					
4.22	Fork dimensions, standard	s/e/l (in)	2 / 3.9 / 42					
	Fork dimensions, optional length	in	30 / 36 / 39 / 42 / 48					
4.24	Fork carriage width	b ₃ (in)	/					
4.25	Width across forks, min-max	b ₅ (in)	24 - 31.1					
4.27	Width across guide rollers	b ₆ (in)	/					
4.31	Ground clearance, with load below mast	m ₁ (in)	2.4					
4.33	Working aisle width, minimum	Ast (in)	63.8					
4.35	Turning radius	Wa (in)	72					
4.42	Right Angle Stack with 40x48 pallet	Ast (in)	63.8					
	Right Angle Stack with 32x48 pallet	Ast (in)	63.8					
Performance Data								
5.1	Travel speed, laden / unladen	mph	5.6					
5.2	Lift speed, laden / unladen	ft/s	0.49 / 0.75					
5.3	Lowering speed, laden / unladen	ft/s	0.98 / 0.98					
5.10	Service brake		Electromagnetic, regenerative					
E-Motor								
6.1	Drive motor rating, 60 min. rating	HP	5.2					
6.2	Lift motor rating, 15% on time	HP	8.6					
6.3	Max. battery box size	LxWxH (in)	14.7 x 38.4 x 30.9					
6.4	Battery voltage, nominal capacity K5	V/Ah	24V/560Ah					
6.5	Battery weight	lb	1,786					
Others								
8.1	Type of drive control		AC traction					

NOBLELIFT reserves the right to make technical changes and improvements to our products to maintain or enhance the quality, delivery, and efficiency.

A GLOBAL LEADER

NOBLELIFT is a global leader in Lithium Technology. We manufacture more than 200 categories and around 30 series of each product. Our products are designed to meet different application demands and are well accepted by our customers in more than 100 countries and regions in Europe, America, Asia, Africa and more.

Products include: sit-down forklifts, rough terrain forklifts, narrow aisle forklifts, walkie-stackers, order pickers, electric pallet trucks, scissor lifts, tuggers, tow tractors, scrubbers, lift tables, manual pallet jacks and more.



FORKLIFTS



NARROW AISLE



STACKERS



POWERED PALLET TRUCKS



SCISSOR LIFTS



TUGGERS



SCRUBBERS

NOBLELIFT NORTH AMERICA

2475 S. Wolf Road
Des Plaines, IL 60018
T: 847-595-7100
F: 847-595-7200
sales@nobeliftna.com
www.nobeliftna.com



Website



Video

AUTHORIZED DEALER

